

KEY FEATURES

- Power Module for PCB Mountable
- Smaller Dimension with High Efficiency
- 2:1 Input Range
- Regulated Output
- Low Ripple and Noise
- Screw Terminal For Optional
- Remote ON/OFF Control (Optional)
- Operating Temperature: -40°C...+85°C (with derating)
- Small Size :1.0 x 1.0 x 0.433 Inches
- 3-Year Product Warranty


ELECTRICAL SPECIFICATIONS

| Model No. | SW15-12-3.3S | SW15-12-5S | SW15-12-12S | SW15-12-15S |
|------------------------|---------------|-------------|--------------|--------------|
| Input Voltage (V.DC.) | 12V (9-18V) | 12V (9-18V) | 12V (9-18V) | 12V (9-18V) |
| Output Voltage (V.DC.) | 3.3V / 3500mA | 5V / 3000mA | 12V / 1250mA | 15V / 1000mA |
| Efficiency | 85% | 89% | 88% | 87% |
| Capacitor Load (max) | 1600μF | 1600μF | 470μF | 330μF |

| Model No. | SW15-24-3.3S | SW15-24-5S | SW15-24-12S | SW15-24-15S |
|------------------------|---------------|--------------|--------------|--------------|
| Input Voltage (V.DC.) | 24V (18-36V) | 24V (18-36V) | 24V (18-36V) | 24V (18-36V) |
| Output Voltage (V.DC.) | 3.3V / 3500mA | 5V / 3000mA | 12V / 1250mA | 15V / 1000mA |
| Efficiency | 86% | 89% | 89% | 88% |
| Capacitor Load (max) | 1600μF | 1600μF | 470μF | 330μF |

| Model No. | SW15-48-3.3S | SW15-48-5S | SW15-48-12S | SW15-48-15S |
|------------------------|---------------|--------------|--------------|--------------|
| Input Voltage (V.DC.) | 48V (36-75V) | 48V (36-75V) | 48V (36-75V) | 48V (36-75V) |
| Output Voltage (V.DC.) | 3.3V / 3500mA | 5V / 3000mA | 12V / 1250mA | 15V / 1000mA |
| Efficiency | 84% | 88% | 88% | 87% |
| Capacitor Load (max) | 1600μF | 1600μF | 470μF | 330μF |

| Model No. | (Single Output) | SW15-12-3.3S SW15-24-3.3S SW15-48-3.3S | SW15-12-5S SW15-24-5S SW15-48-5S | SW15-12-12S SW15-24-12S SW15-48-12S | SW15-12-15S SW15-24-15S SW15-48-15S |
|------------------------|----------------------------------|--|--|---|---|
| Max Output Wattage (W) | | 11.55W | 15W | 15W | 15W |
| Input | Input Filter | L-C type | | | |
| Output | Voltage (V.DC.) | 3.3 | 5 | 12 | 15 |
| | Voltage Accuracy | ±2% | | | |
| | Current (mA) max | 3500 | 3000 | 1250 | 1000 |
| | Line Regulation (LL-HL) (typ.) | ±0.5% | | | |
| | Load Regulation (10-100%) (typ.) | ±1% | | | |
| | Ripple | 75 mV max. | | 100mV max. | |
| | Noise | 100 mV max. | | 125mV max. | |
| Protection | Switching Frequency | 450KHz | | | |
| | Over Power Protection | Works over 120% of rating and recovers automatically. | | | |
| | Over Voltage Protection | Zener diode clamp | | | |
| Isolation | Short Circuit Protection | Current limit, auto-recovery | | | |
| | Voltage | 1600 VDC. | | | |
| | Resistance | 10 ⁸ ohms | | | |
| Environment | Capacitance | 1000 pF | | | |
| | Operating Temperature | -40°C...+85C (with derating) | | | |
| | Storage Temperature | -55°C...+105°C | | | |
| | Case Temperature | +105°C max. | | | |
| | Temperature Coefficient | ±0.02% Per°C | | | |
| | Humidity | 95% RH | | | |
| Physical | MTBF | >800,000 h @ 25°C (MIL-HDBK-217F) | | | |
| | Dimension (L x W x H) | 1.0 x 1.0 x 0.433 Inches (25.4 x 25.4 x 11.0 mm) Tolerance ±0.5 mm | | | |
| | Case Material | six-side shielded Aluminum with Non-Conductive base, Black Anodize | | | |
| | Weight | 15g | | | |
| | Cooling Method | Free-air convection | | | |

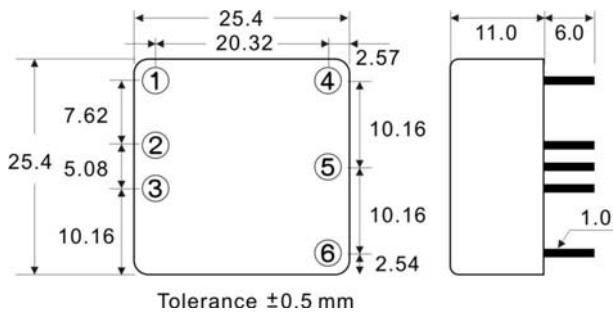
1.All specifications valid at normal input voltage, full load and +25°C after warm-up time unless otherwise stated.

2.Ripple & Noise are measured at 20MHz of bandwidth with 0.1μF & 47μF parallel capacitor.

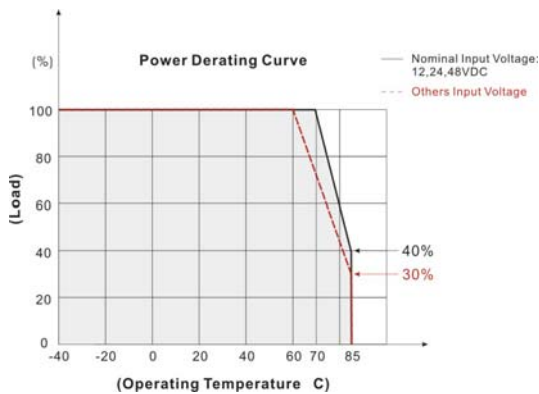
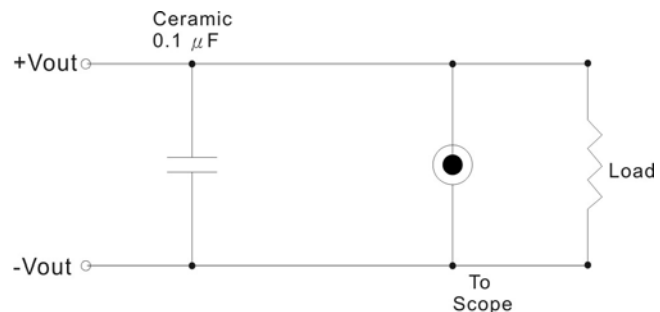
SW15 SERIES
15 Watts

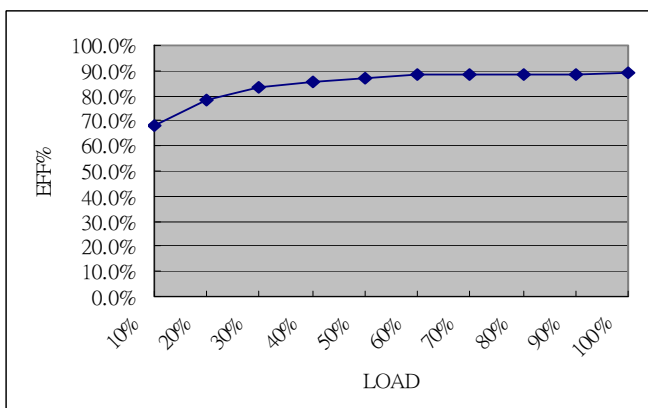
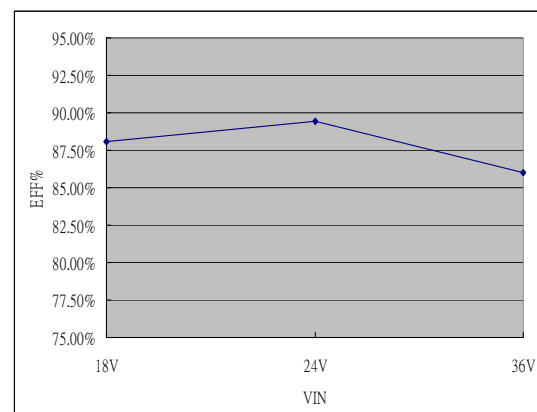
| | | | | |
|---------------------------|--|--|---|---|
| Model No. (Single Output) | SW15-12-3.3S SW15-24-3.3S SW15-48-3.3S | SW15-12-5S SW15-24-5S SW15-48-5S | SW15-12-12S SW15-24-12S SW15-48-12S | SW15-12-15S SW15-24-15S SW15-48-15S |
| Remote ON/OFF | DC-DC ON | Open or +5 VDC ~ +15 VDC | | |
| | DC-DC OFF | When -DC IN and ON/OFF CTL is Short (or 0 VDC ~ +0.5VDC) | | |
| | Input Current of Remote Control Pin | 1mA | | |
| | Remote off State Input Current | 4mA | | |

- All specifications valid at nominal input voltage, full load and +25°C after warm-up time unless otherwise stated.
- Ripple & Noise are measured at 20MHz of bandwidth with 0.1 μ F & 47 μ F parallel capacitor.

MECHANICAL DIMENSION (Top View)


| PIN# | Single |
|------|--------------|
| 1 | ON / OFF CTL |
| 2 | -DC IN |
| 3 | +DC IN |
| 4 | -DC OUT |
| 5 | NO PIN |
| 6 | +DC OUT |

DERATING

OUTPUT NOISE

 The output noise is measured with 0.1 μ F tantalum capacitor.

SW15-24-5S Efficiency
Load=100%(3A)

VIN=24 VDC


SW15 SERIES

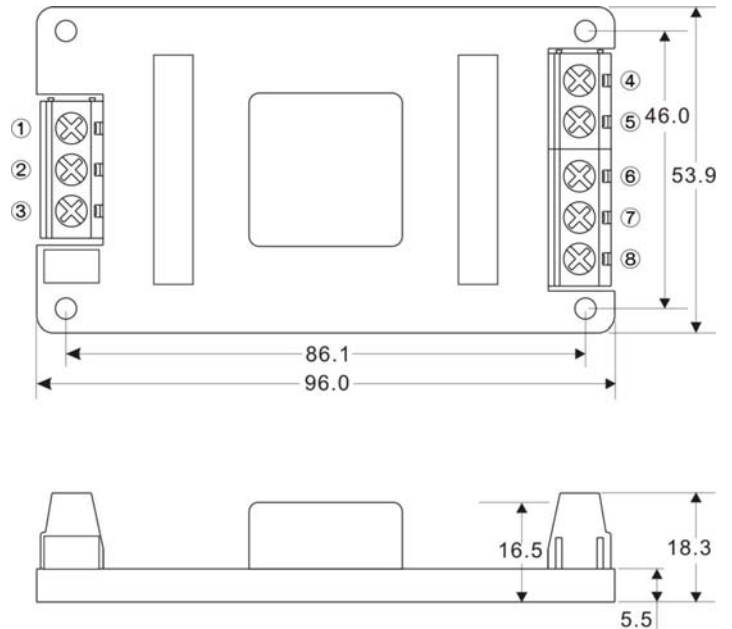
15 Watts

SCREW TERMINAL

SW15-A2



| PIN# | Single |
|------|------------|
| 1 | CTRL |
| 2 | -DC IN |
| 3 | +DC IN |
| 4 | -DC OUT |
| 5 | NO CONNECT |
| 6 | NO CONNECT |
| 7 | NO CONNECT |
| 8 | +DC OUT |



SW15-A5



| PIN# | Single |
|------|------------|
| 1 | CTRL |
| 2 | -DC IN |
| 3 | +DC IN |
| 4 | -DC OUT |
| 5 | NO CONNECT |
| 6 | NO CONNECT |
| 7 | NO CONNECT |
| 8 | +DC OUT |

